

# Versatility Grinder

## Electric Abrasive Belt Machine

Ideal for an Extensive Variety of Finishing Applications

### "Slack Action," Variable Speed Model

- Machine offers simplified design that eliminates belt tension rollers to reduce maintenance costs.
- Design also allows greater use of abrasive belt slack areas. Operator has flexibility to finish workpiece on belt slack in a variety of positions, for optimum efficiency.
- Grind on Contact Wheel for fast material removal, then polish with slack of belt.
- Ideal for use on castings and forgings, turbine blades, medical implants, golf club parts, piping, investment castings and more.
- Linear belt tracking adjustment works with conventional tracking system for superior abrasive belt control.
- Heavy-duty 2" x 2" Contact Arm (67215) included.

#### Model 64860

600 - 4,000 SFPM, 115 V (AC), 1 hp

#### Model 64861

600 - 4,000 SFPM, 230 V (AC), 1 hp

#### Model 64862

2,000 - 8,000 SFPM, 230 V (AC), 3 hp

#### Model 64863

2,000 - 8,000 SFPM, 460 V (AC), 3 hp



Model 64860

115 V (AC)

Model Number	Motor hp (W)	Abrasive Belt Size Inch (mm)	Max. SFPM (SMPM)	Voltage	Phase	Frequency	Weight Pound (kg)	Length Inch (mm)	Height Inch (mm)
64860	1 (744)	2 (51) x 72 (1,829)	600-4,000 (183-1,219)	115	1	50/60 Hz	120 (55)	33 (838)	22 (559)
64861	1 (744)	2 (51) x 72 (1,829)	600-4,000 (183-1,219)	230	1	50/60 Hz	120 (55)	33 (838)	22 (559)
64862	3 (2,237)	2 (51) x 72 (1,829)	2,000-8,000 (610-2,438)	230	3	50/60 Hz	120 (55)	33 (838)	22 (559)
64863	3 (2,237)	2 (51) x 72 (1,829)	2,000-8,000 (610-2,438)	460	3	50/60 Hz	120 (55)	33 (838)	22 (559)

## Versatility Grinder Accessories

### 1 hp Electric Motor Variable Speed

#### 64870

- 1 hp (746 W), 115 Volt, 1 Phase, 50/60 Hz



#### 64871

- 1 hp (746 W), 230 Volt, 1 Phase, 50/60 Hz

### 1.5 HP Electric Motor Fixed Speed

#### 64872

- 1.5 hp (1,119 W), 115 Volt, 1 Phase, 50/60 Hz



#### 64873

- 1.5 hp (1,119 W), 230 Volt, 1 Phase, 50/60 Hz

### 3 hp Electric Motor Variable Speed

#### 64874

- 3 hp (2,237 W), 230 Volt, 3 Phase, 50/60 Hz



#### 64875

- 3 hp (2,237 W), 460 Volt, 3 Phase, 50/60 Hz

### Vacuum Scoop Assembly

#### 64932

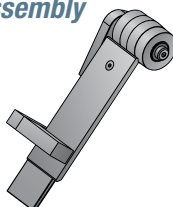
- Attaches to "thru-housing" vacuum port, for efficient collection of sanding debris.



### Platen Assembly

#### 64962

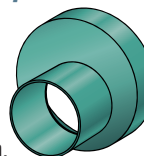
- Ideal for platen grinding.



### Vacuum Adapter

#### 64923

- For connection to 2-1/2" (63mm) dia. vacuum hose.



### Pedestal Assembly

#### 64895

- For easy positioning of machine. Frees up additional work space.



FASTTRACK