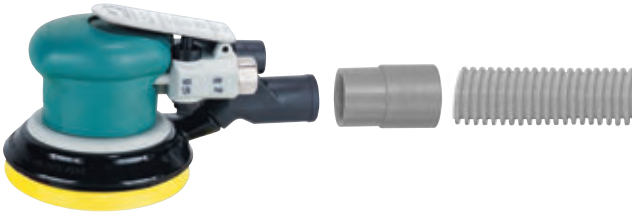


Exhaust Hoses

Many Configurations to Match Vacuum System Requirements



Hose Diameter	Part Number	Length	Cuffs
3/4" (19 mm)	52036	2-1/2' (762 mm)	1
	50834	5' (152 cm)	2
	95729	Specify length	0*
1" (25 mm)	50638	18" (46 cm)	2
	50682	6' (183 cm)	2
	95596	4-1/2' (137 cm)	1
	95709	10' (305 cm)	2
	95395	Specify up to 50' (15-1/4 m)	
1-1/4" (32 mm)	54201	4-1/2' (137 cm)	0
	54202	6' (183 cm)	2
	54205	Specify - up to 50' (15-1/4 m)	0*
1-1/2" (38 mm)	95847	Specify - up to 50' (15-1/4 m)	0

*NOTE: Optional 95602 Factory-Installed Cuffs available

Vacuum Hose Reduction Assembly

Part Number 96580

2" (51 mm) Non-Thread Vacuum Connection to 1-1/4" (32 mm) Tool Connection



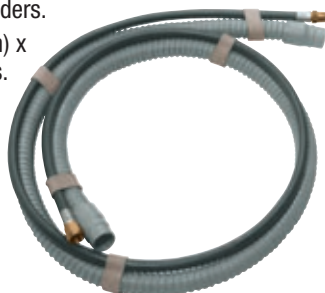
- For connecting tools with 2" (51 mm) vacuum port to Dynabrade Portable Vacuum.
- Use to connect Dynabrade 8" (203 mm) dia. Central Vacuum Random Orbital and Gear-Driven Sanders.

Exhaust Hose Assembly

Part Number 95820

1" (25 mm) Dia. x 10' (3 m) Long

- For use with Dynorbital® Sanders.
- 95709 Flex Hose: 1" (25 mm) x 10' (3-1/4 m) long with cuffs.
- 95816 Air Line: 1/4" (6 mm) dia. x 11' (3-3/8 m) long
- 95362 Rubber Connectors.



Vacuum Hose Swivel Adapters

The Adapter SWIVELS for Comfortable Tool Maneuverability

- Lightweight vacuum hose; easy connection to air tools.
- 1" (25 mm) connection to tool.

Part Number 96572 1" Swivel Adapter

- 1" (25 mm) connection to vacuum hose.

Part Number 96573 1-1/4" Swivel Adapter

- 1-1/4" (32 mm) connection to vacuum hose.



Vacuum Conversion Kits

For use with Dynorbital-Spirit® and Dynorbital® Supreme

- Pad diameter determines which kit is right for your tool.
- Conversion kit allows user to change tool into desired vacuum configuration.



Part Number 57120



Pad Diameter	Converts Tool to	Kit Part Number
3-1/2" (89 mm)	Vacuum Ready	57118
3-1/2" (89 mm)	Central Vacuum	57119
5" (127 mm)	Vacuum Ready	57120
5" (127 mm)	Central Vacuum	57121
6" (152 mm)	Vacuum Ready	57122
6" (152 mm)	Central Vacuum	57123