

# Dynabug® “Model T” Sanding Pads

Balanced and Weight-Mated to Dynabrade Tools

All pads: 20,000 RPM max. operating speed • All pads mount with four screws (except P/N 57999 - mounts with clips)

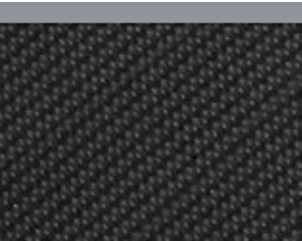
## Vinyl-Face Sanding Pads



### Vinyl-Face Pads

Ideal for PSA-type disc adhesion. Remove abrasive adhesive paper liner and press abrasive to vinyl-face sanding pad. Quick disc removal.

## Hook-Face Sanding Pads



### Hook-Face Pads

Short nap pads for use with reattachable discs.

## Non-Vacuum Pads

Pad Dimensions	Part Number	Thickness	Density
5" (127 mm) Dia.	56246	5/8" (16 mm)	Soft
	56249	3/8" (10 mm)	Medium
6" (152 mm) Dia.	56269	3/8" (10 mm)	Medium
	56287	5/8" (16 mm)	Soft
4" (102 mm) W x 4-5/16" (110 mm) L with Clips	57999	1/4" (6 mm)	Medium
4-1/4" (108 mm) W x 4-1/2" (114 mm) L	56244	3/8" (10 mm)	Medium
	56245	5/8" (16 mm)	Soft

## Non-Vacuum Pads

Pad Dimensions	Part Number	Thickness	Density
5" (127 mm) Dia.	56247	5/8" (16 mm)	Soft
	56248	3/8" (10 mm)	Medium
6" (152 mm) Dia.	56268	3/8" (10 mm)	Medium
	56288	5/8" (16 mm)	Soft
4-1/4" (108 mm) W x 4-1/2" (114 mm) L	57996	5/8" (16 mm)	Soft
	57998	3/8" (10 mm)	Medium

## Vacuum Pads

Pad Dimensions	Part Number	Holes	Thickness	Density
4-1/4" (108 mm) W x 4-1/2" (114 mm) L	56286	6	1/4" (6 mm)	Medium
	56291	6	3/8" (10 mm)	Medium
	56293	6	5/8" (16 mm)	Soft

## Vacuum Pads

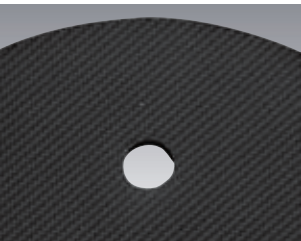
Pad Dimensions	Part Number	Holes	Thickness	Density
5" (127 mm) Dia.	58086	5	13 mm (1/2")	Medium
6" (152 mm) Dia.	58093	6	13 mm (1/2")	Medium
4-1/4" (108 mm) W x 4-1/2" (114 mm) L	56292	6	3/8" (10 mm)	Medium
	56294	6	5/8" (16 mm)	Soft
	56285	6	5 mm (3/16")	Medium



# Wet Dynabug® “Model T” Sanding Pads

Hook-Face Balanced and Weight-Mated Sanding Pads

All pads: 20,000 RPM max. operating speed • All pads mount with four screws



### Hook-Face Pads

Short nap pads for use with reattachable discs. Pads feature channels from vacuum holes to feed water through the sanding pad.

## Vacuum Pads

Pad Dimensions	Part Number	Holes	Thickness	Density
5" (127 mm) Dia.	58086	5	13 mm (1/2")	Medium
6" (152 mm) Dia.	58093	6	13 mm (1/2")	Medium