



Portable Vacuum System

Operating Manual

61300 (9.9 gal./36 ltr.) 120v-60Hz (US)
61301 (17 gal./64 ltr.) 120v-60Hz (US)
61302 (9.9 gal./36 ltr.) 230v-50Hz (UK)
61303 (17 gal./64 ltr.) 230v-50Hz (UK)
61304 (9.9 gal./36 ltr.) 110v-60Hz (UK)

61305 (17 gal./64 ltr.) 110v-60Hz (UK)
61306 (9.9 gal./36 ltr.) 230v-50Hz (EUR)
61307 (17 gal./64 ltr.) 230v-50Hz (EUR)
61308 (9.9 gal./36 ltr.) 230v-50Hz (OUS)
61309 (17 gal./64 ltr.) 230v-50Hz (OUS)



These Portable Vacuum Systems have been developed as a safe, portable, mobile, yet powerful industrial tool for commercial use. To ensure that this quality equipment is properly used and maintained to its full capability, please carefully read the following safety instructions and operating procedures before commencement of the operation.

Contact our Customer Service Department at 1-800-828-7333 for any questions or service requirements.

IMPORTANT SAFETY INSTRUCTIONS

When operating this equipment, basic precautions should always be strictly followed including the instructions listed below:

1. Components used in packaging (ie. plastic bags) can be dangerous keep away from children and animals.
2. The unit is for **DRY USE ONLY** and must be stored in a dry room.
3. The use of this machine for anything not specified in this manual may be dangerous and must be avoided.
4. The suction nozzle should be kept away from the body, especially delicate areas such as the eyes, ears and mouth.
5. The equipment should be correctly assembled before use.
6. Ensure that power socket is correct for the machine.
7. Check the voltage indicated on the rating plate is the same as the supply voltage.
8. These machines are not designed for picking up health endangering dusts or inflammable/explosive substances.
9. Never leave the equipment unattended while in use.
10. Never use this equipment to pick up any kind of liquid.
11. Never carry out any maintenance on the machine without first disconnecting from the main supply, if the machine is to be left unattended the supply should also be terminated.
12. The main supply cable should not be used to pull or lift the machine.
13. The machine should never be emersed in water or a pressure jet of water used for cleaning.
14. Periodically examine the main cable and machine for damage. If any damage is found contact your service centre for repair.
15. Should extension cables be used, ensure that the cable rating is suitable for use with the equipment. Do not use the cable coiled as this could result in a voltage drop or overheating. Keep dry at all times.
16. This equipment should **NOT** be used to pick up water from containers, lavatories, tubs, etc.
17. Service and repairs must be carried out by qualified personnel only. Replacement parts for the machine must be manufacturers original spare parts only.
18. The manufacturer cannot be held responsible for any damage/injury caused to persons or property, because of the incorrect use of the machine due to procedures being used which are not specified in this instruction manual.

GROUNDING INSTRUCTIONS

This unit must be grounded. If it should malfunction or breakdown, grounding provides a path of least resistance for electric current to reduce the risk of electric shock.

Where it is critical to avoid shocks or sparks caused by static electricity, an electrically conductive and grounded air supply hose must be used.

WARNING

Grounding by means of a ground wire between both ends of the air supply tubing passing through vacuum hose is recommended.

ASSEMBLY INSTRUCTIONS

Refer to the drawing and parts list for the name and location of parts.

1. While opening the carton, carefully inspect outside of the carton for any sign of transportation damage, and if so, notify your shipper immediately.
2. Open carton and remove hoses, hose connectors and other accessories.
3. Lay carton on its back and wheel the unit out.
4. Remove all packing, release the unit and remove Motorhead/Vacuum Head Assembly to make sure no packing materials are left inside the unit.
5. Check to make sure the filter is seated firmly. If not, tighten at base of filter unit.
7. Remove the vacuum hose assembly. Note that the air supply tube (the smaller of the two) protrudes at both ends and is longer than the vacuum hose.
8. Connect quick coupler male end to air outlets located on vacuum head assembly.
9. Insert vacuum hoses.
10. Connect air supply to air inlet fitting (1/4" NPT female threads) located at the back side of Motorhead. Air pressure should be adjusted according to the pressure requirement of the air tools you are using. Do not exceed 150 PSIG (10.3 kg/cm²). Some pressure drop is unavoidable between the main air supply and the air tools due to internal flow resistance in a long air hose.

Air pressure of 20 to 30 PSIG (1.4 to 2.0 kg/cm²) higher than the air pressure specified for the air tool being used is recommended.

The installation of a Dynabrade Filter-Regulator-Lubricator (FRL Part No. 11411) is highly recommended to protect the unit and the air tools.

Where it is critical to avoid shocks or sparks caused by static electricity, an air supply hose which is electrically conductive and ground must be used.

11. All Dynabrade Vacuum Models come with a sample dust bag. Install bag inside main body. Make sure that vacuum connection tube protrudes through the hole in the bag.
12. Order dust bags (Part No. 64682) before you run out of them.
13. Return Motorhead/Vacuum Head Assembly to the unit and lock the two rim clamps to secure Motorhead/Vacuum Head Assembly in position.
14. Connect your Dynabrade air tool or accessory and you are now ready for working with the Dynabrade Portable Vacuum System.

CAUTION

THIS IS A PRECISION PIECE OF EQUIPMENT designed for dust extraction to keep your ENVIRONMENT and your REPUTATION "DUST-FREE." Read operating instructions before using Dynabrade Portable Vacuum System and be thoroughly conversant with safety precautions in your locality.

OPERATING INSTRUCTIONS

The following items should be well-noted for the effective use of the unit.

1. Always wear safety glasses and any other safety items required by law.
2. The vacuum system will operate by an on/auto/manual switch located on the front of the Motorhead/Vacuum Head Assembly. This switch must be turned on to activate the Motorhead.
3. **VACUUM SPEED CONTROL:** Unit is equipped with a rheostat motor control. Infinitely adjustable speed allows suction regulation for wide range of tools.



4. **ELECTRONIC THERMAL PROTECTION DEVICE:** Unit is equipped with a overload prevention system. If this feature is activated a **20 MIN. COOL DOWN PERIOD** inhibits use. After a complete 20 min. cool down period has passed the Electronic Thermal Protection Device will **RE-SET** automatically and the unit will be on line ready for use.

OPERATING TIPS AND TROUBLESHOOTING

Keep machine clean to ensure optimum performance. After each use, lift off vacuum head and knock dust from filter. After one hour of continuous use, lift out the Motorhead/Vacuum Head Assembly and check the amount of dust accumulated in the unit. Remove the dust bag if necessary and replace with a new one. We recommend a soft brush to clean the filter. **DO NOT USE A BLOW GUN.**

Decrease in Vacuum Performance

1. Clean the filter thoroughly and as often as necessary. The filter used inside is water resistant and washable. To prevent damage, do not use high pressure or solvent to wash the filter.

2. If the filter (P/N 64684) should become damaged or badly clogged and cannot be cleaned, replace with a new one.
3. Check all the vacuum lines for blockage or leakage.

Vacuum Stops During Use

1. This vacuum is equipped with a Electronic Thermal Protection Device. If the vacuum stops and the red indicator light appears ON, the unit has shut down as a result of increased temperature. Once the unit has regained a temperature that is allowable for operation the vacuum will resume operation.

REMOVAL/INSTALLATION OF MOTORHEAD FROM MAIN ASSEMBLY

If the filter element becomes clogged or to clean the inner portions of the drum (canister) the Motorhead Assembly must then be removed to perform cleaning. When removal becomes necessary for cleaning or other service, follow the procedures described below.

Removal

1. Unplug the unit before attempting service or maintenance work.
2. Remove Top Lid by unlatching (2) hinges.

3. Use a conventional vacuum cleaner to clean entire inside of Motorhead/Vacuum Head Assembly and drum (canister).

Upon completion of the service work, install top lid according to the following procedure:

Installation

1. Place cleaned unit onto the drum (canister) and latch (2) hinges to properly attach the lid. Unit is now ready for operation.

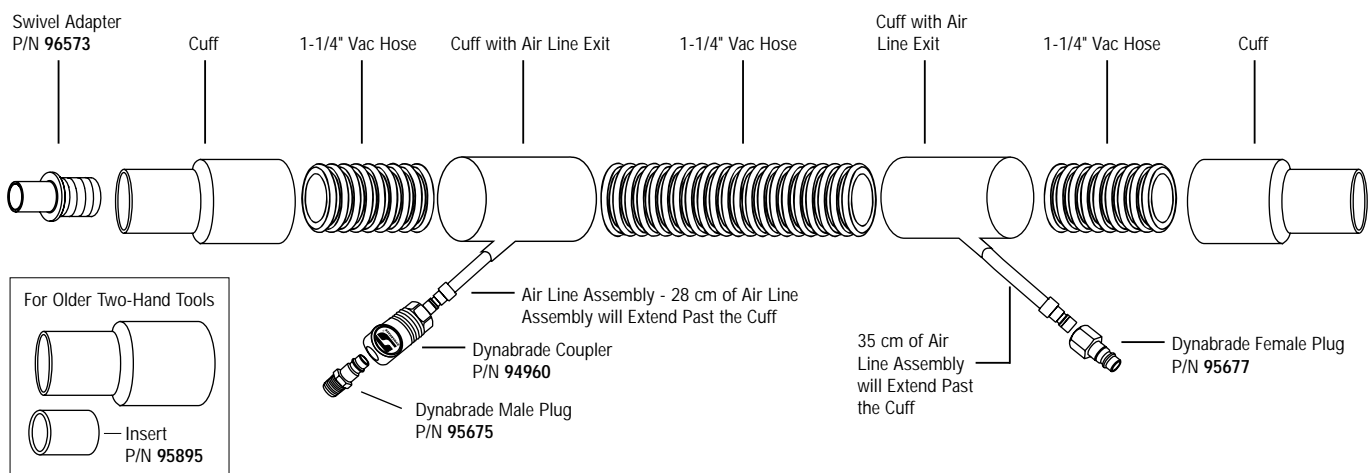
TILT-N-CLEAN OPERATION INSTRUCTION

Unit has a Tilt-n-Clean feature to aid in overall functionality of the work equipment and work environment:

1. Unplug the unit before attempting service or maintenance work.
2. Unclamp and remove Motorhead/Vacuum Head Assembly. Drum (canister) is now able to be tilted backwards and emptied. Dispose of debris properly.

3. Or, Pull side release hinges away from the drum (canister) and remove the entire drum (canister) from the trolley. With drum (canister) removed dispose of debris properly.

94941 COAXIAL VACUUM HOSE ASSEMBLY



MACHINE PARTS LIST – (9.9 gal./36 ltr.)

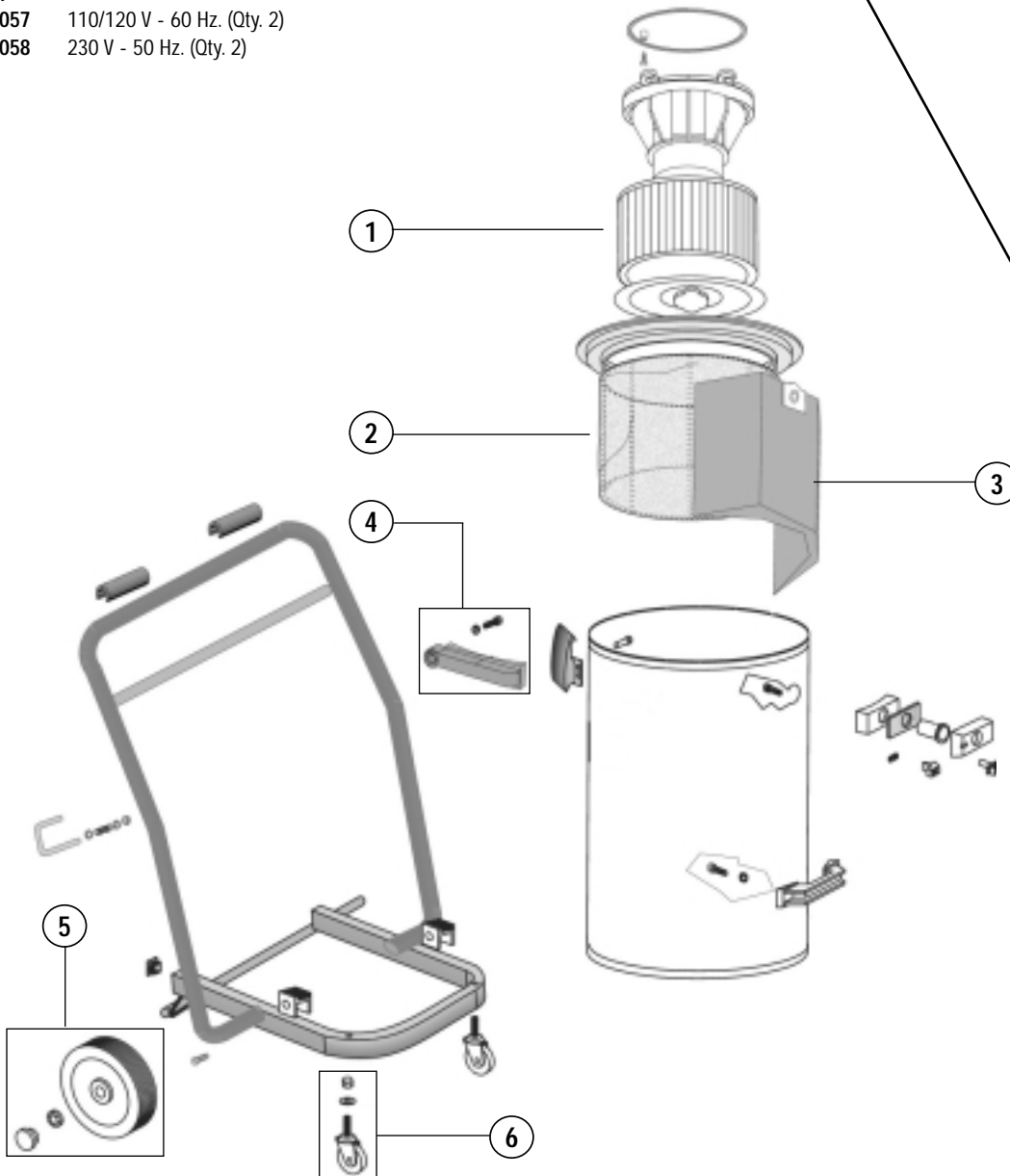
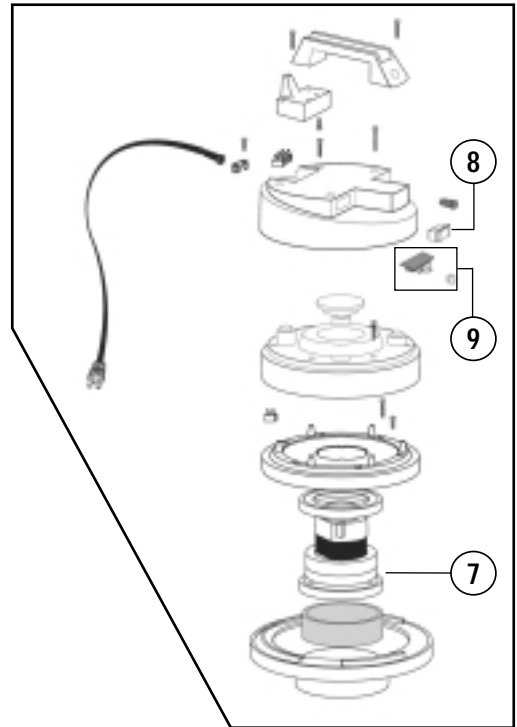
ITEM	PART NO.	DESCRIPTION
1	64684	H.E.P.A. Filter
	64683	(Optional) Paper Cartridge Filter
2	64685	Felt Insert
3	64682	Disposable Vacuum Bag
4	80055	Tipping Handle Assembly
5	80052	Rear Wheel Assembly
6	80050	Standard Front Wheel Assembly
7	80059	Motor (110/120 V - 60 Hz)
	80060	Motor (230 V - 50 Hz)
8	80077	Power Switch
9	80053	Vacuum Speed Control Assembly (110/120 V - 60 Hz)
	80054	Vacuum Speed Control Assembly (230 V - 50 Hz)

Replacement Brushes:

80057 110/120 V - 60 Hz. (Qty. 2)

80058 230 V - 50 Hz. (Qty. 2)

Motorhead Assembly



MACHINE PARTS LIST - (17 gal./64 ltr.)

ITEM	PART NO.	DESCRIPTION
1	64684	H.E.P.A. Filter
	64683	(Optional) Paper Cartridge Filter
2	64687	Felt Insert
3	80076	Disposable Vacuum Bag
4	80056	Tipping Handle Assembly
5	80052	Rear Wheel Assembly
6	80050	Standard Front Wheel Assembly
7	80059	Motor (110/120 V - 60 Hz)
	80060	Motor (230 V - 50 Hz)
8	80077	Power Switch
9	80053	Vacuum Speed Control Assembly (110/120 V - 60 Hz)
	80054	Vacuum Speed Control Assembly (230 V - 50 Hz)

Replacement Brushes:

- 80057 110/120 V - 60 Hz. (Qty. 2)
- 80058 230 V - 50 Hz. (Qty. 2)

MOTORHEAD ASSEMBLY

