



Portable Vacuum System

Operating Manual

61300	(9.9 gal./36 ltr.)	120v-60Hz	(US)	61306	(9.9 gal./36 ltr.)	230v-50Hz	(EUR)
61301	(17 gal./64 ltr.)	120v-60Hz	(US)	61307	(17 gal./64 ltr.)	230v-50Hz	(EUR)
61302	(9.9 gal./36 ltr.)	230v-50Hz	(UK)	61308	(9.9 gal./36 ltr.)	230v-50Hz	(OUS)
61303	(17 gal./64 ltr.)	230v-50Hz	(UK)	61309	(17 gal./64 ltr.)	230v-50Hz	(OUS)
61304	(9.9 gal./36 ltr.)	110v-60Hz	(UK)	61310	(9.9 gal./36 ltr.)	220v-60Hz	(KOR)
61305	(17 gal./64 ltr.)	110v-60Hz	(UK)	61311	(17 gal./64 ltr.)	220v-60Hz	(KOR)



These Portable Vacuum Systems have been developed as a safe, portable, mobile, yet powerful industrial tool for commercial use. To ensure that this quality equipment is properly used and maintained to its full capability, please carefully read the following safety instructions and operating procedures before commencement of the operation.

"M" CLASS DRY VACUUM

When employed in accordance with their intended use, the industrial vacuum cleaners described in these operating instructions are suitable for picking up non-flammable, dry dusts. They correspond to dust class "M" in accordance to: EN 60335-2-69. By SLG, Germany

IMPORTANT SAFETY INSTRUCTIONS

When using an electrical appliance, basic precautions should always be followed, including the following:

READ ALL INSTRUCTIONS BEFORE USING

! WARNING - To reduce the risk of fire, electric shock, or injury:

1. Do not leave appliance when plugged in. Unplug from outlet when not in use and before servicing.
2. Do not expose to rain. Store indoors.
3. Do not allow to be used as a toy. Not to be used by children.
4. Use only as described in this manual. Use only manufacturers's recommended attachments.
5. Do not use with damaged cord or plug. If appliance is not working as it should, has been dropped, damaged, left outdoors, or dropped into water, return it to a service center.
6. Do not pull or carry by cord, use cord as a handle, close a door on cord, or pull cord around sharp edges or corners. Do not run appliance over cord. Keep cord away from heated surfaces.
7. Do not unplug by pulling on cord. To unplug, grasp the plug, not the cord.
8. Do not handle plug or appliance with wet hands.
9. Do not put any object into openings. Do not use with any opening blocked; keep free of dust, lint, hair and anything that may reduce air flow.
10. Keep hair, loose clothing, fingers and all parts of the body away from openings and moving parts.
11. Do not vacuum anything that is burning or smoking, such as cigarettes, matches or hot ashes.
12. Do not use without filters in place.
13. Turn off all controls before unplugging.
14. Use extra care when cleaning on stairs.
15. Do not pick up flammable or combustible liquids such as gasoline, or use in areas where they may be present.
16. Connect to a properly grounded outlet only. See Grounding Instructions.
17. Use only original spare parts.

(continued on next page)

IMPORTANT SAFETY INSTRUCTIONS (CONT.)

After finishing work:

1. Switch off the cleaner and unplug the power cord.
2. Wind up the power cord.
3. Empty dirt tank.
4. Clean the vacuum cleaner inside and outside by suction and wiping.
5. Store the machine indoors in clean, dry place.
6. This appliance is provided with an automatically reset thermal limiter to avoid damage to the motor.

SAVE THESE INSTRUCTIONS

INSTRUCTIONS TO BE STRICTLY FOLLOWED

- Components used in packaging (i.e. plastic bags) can be dangerous: keep away from children and animals.
- ATTENTION: This machine can only be used to suction dry substances and cannot be utilized outdoor with rainy weather.
- The use of this machine for anything not specified in its manual may be dangerous and must be avoided.
- The suction nozzle should be kept away from the body, especially from delicate areas such as eyes, ears and mouth.
- The equipment should be correctly assembled before use.
- Ensure that power socket used is correct for the machine plug.
- Ensure that the voltage indicated on the rating plate is the same as the power supply voltage.
- WARNING: These machines are not designed for picking up health endangering dusts (i.e. fireplace ash) or inflammable/explosive substances.
- Never leave the equipment unattended while in use.
- Never use this equipment to pick up any kind of liquids.
- Always remove the plug from the socket before carrying out any operation with the machine or whenever the machine remains unattended or can be handled by children or people not conscious.
- The main supply cable should not be used to pull or lift the machine.
- Never immerse the machine in water for cleaning nor use pressure water jets to wash it.
- Should the line cable be damaged, this must be either replaced by the manufacturer or by its service center or in case by a person having similar skills, so as to prevent any risk.
- If you use extension cables make sure they are placed on dry surfaces and protected from eventual water jets.
- This equipment should not be used to pick up water from containers, sinks, tubs, etc.
- Service and repairs must be carried out by qualified personnel only. Replacement parts for the machine must be original spare parts only.
- The manufacturer cannot be held responsible for any damage/injury caused to persons or property, because of the incorrect use of the machine due to procedures being used which are not specified in this manual.

ASSEMBLY INSTRUCTIONS

Refer to the drawing and parts list for the name and location of parts.

1. While opening the carton, carefully inspect outside of the carton for any sign of transportation damage, and if so, notify your shipper immediately.
2. Open carton and remove hoses, hose connectors and other accessories.
3. Lay carton on its back and wheel the unit out.
4. Remove all packing, release the unit and remove Motorhead/Vacuum Head Assembly to make sure no packing materials are left inside the unit.
5. Check to make sure the filter is seated firmly. If not, tighten at base of filter unit.
6. On the vacuum hose assembly, note that the air supply tube (the smaller of the two) protrudes at both ends and is longer than the vacuum hose.
7. Connect quick coupler male end to air outlets located on vacuum head assembly. (See instruction on card.)
8. Insert vacuum hoses.
9. Connect air supply to air inlet fitting (3/8" NPT female threads) located at the back side of Motorhead. Air pressure should be adjusted according to the pressure requirement of the air tools you are using. Do not exceed 150 PSIG (10.3 Bar). Some pressure drop is unavoidable between the main air supply and the air tools due to internal flow resistance in a long air hose.

1/2" INTERNAL DIAMETER SUPPLY AIR LINE is recommended. Set regulator by installing an in-line pressure gage (Part No. 94315) at the inlet of the air tool being used. Run the tool and adjust regulator such that there is 90 PSIG/6.2 Bar @ the tool inlet.

The installation of a Dynabrade Filter-Regulator-Lubricator (FRL Part No. 11411) is highly recommended to protect the unit and the air tools.

Where it is critical to avoid shocks or sparks caused by static electricity, an air supply hose which is electrically conductive and ground must be used.

10. Install disposable vacuum bag (included) inside main body of Vacuum. Make sure that vacuum connection tube protrudes through the hole in the bag.
11. Order dust bags (Part No. 64682 or 80076) before you run out of them.
12. Return Motorhead/Vacuum Head Assembly to the unit and lock the two rim clamps to secure Motorhead/Vacuum Head Assembly in position.
13. Connect your Dynabrade air tool or accessory and you are now ready for working with the Dynabrade Portable Vacuum System.

IMPORTANT NOTICE Installation of air inlet fitting on back of vacuum requires (2) wrenches. This will ensure proper connection and restricts the internal air hoses from twisting.

⚠ CAUTION

THIS IS A PRECISION PIECE OF EQUIPMENT designed for dust extraction to keep your ENVIRONMENT "DUST-FREE." Read operating instructions before using Dynabrade Portable Vacuum System and be thoroughly conversant with safety precautions in your locality.

GROUNDING INSTRUCTIONS

Where it is critical to avoid shocks or sparks caused by static electricity, an electrically conductive and grounded air supply hose must be used.

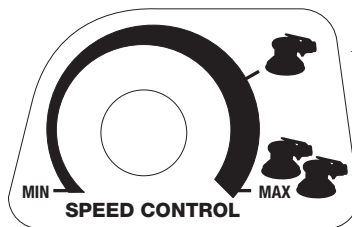
⚠ WARNING

Grounding by means of a ground wire between both ends of the air supply tubing passing through vacuum hose is recommended.

OPERATING INSTRUCTIONS

The following items should be well-noted for the effective use of the unit.

1. Always wear safety glasses and any other safety items required by law.
2. The vacuum system will operate by an on/auto/manual switch located on the front of the Motorhead/Vacuum Head Assembly. This switch must be turned on to activate the Motorhead.
3. **VACUUM SPEED CONTROL:** Unit is equipped with a rheostat motor control. Infinitely adjustable speed allows suction regulation for wide range of tools. **Note:** For one tool, please turn the vacuum speed control to 3/4 power.



Use 3/4 Power Position for one tool operation, full power for two.

4. **ELECTRONIC THERMAL PROTECTION DEVICE:** Unit is equipped with an overload prevention system. If this feature is activated a **20 MINUTE COOL DOWN PERIOD** inhibits use. After a complete 20 minute cool down period has passed the Electronic Thermal Protection Device will **RE-SET** automatically and the unit will be on line ready for use.
5. **VISUAL WARNING SIGNAL:** Unit is equipped with a visual warning (yellow) light to indicate when air flow falls below standard. Turn off vacuum and replace disposable collection bag. The warning signal will **RE-SET** automatically and the unit will be ready for use.

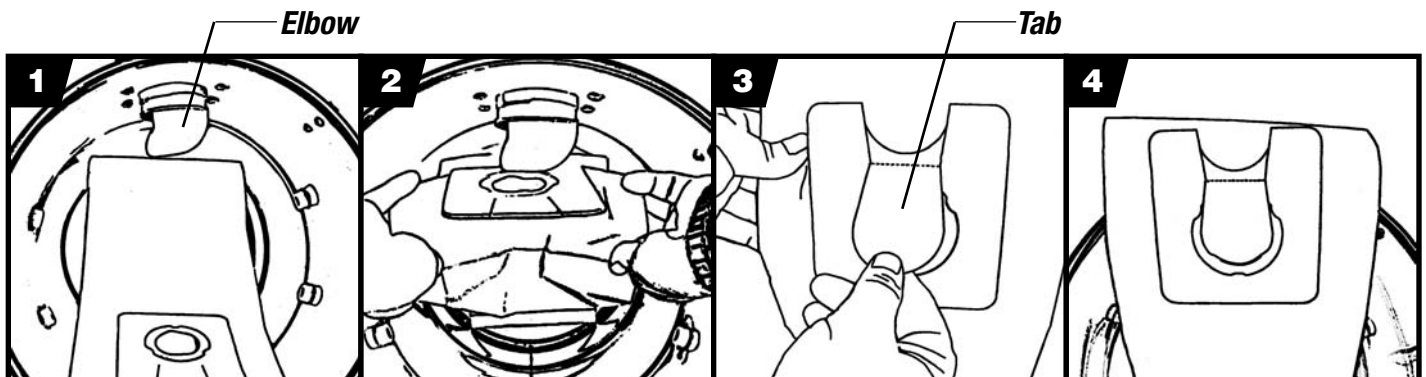
IMPORTANT NOTICE

1. For "M" Class Dust Collection, you must use all three filter elements (Paper Filter, Felt Insert, Disposable Bag).
2. Please inspect all filter elements regularly and replace when necessary. Dust in the motor area will damage the motor within a short time. Dust in the motor will Void Warranty.

DISPOSABLE BAG INSTALLATION/REMOVAL INSTRUCTIONS

When vacuuming dusts that are dangerous to health, with values of a maximum concentration in the work place, or carcinogenic dust of groups I, II and III (e.g., asbestos), the waste dusts require special handling and disposal.

Disposal of hazardous material must conform with health and safety regulations.



Installation

1. Insert and expand bag.
2. Place bag onto the elbow of the canister unit until rubber gasket settles in grooved slot of elbow.

Removal

3. Pull bag off and pull tab forward.
4. Push tab until it covers opening and locks with the rubber gasket.

REMOVAL/INSTALLATION OF MOTORHEAD FROM MAIN ASSEMBLY

If the filter element becomes clogged or to clean the inner portions of the drum (canister) the Motorhead Assembly must then be removed to perform cleaning. When removal becomes necessary for cleaning or other service, follow the procedures described below.

Removal

1. Unplug the unit before attempting service or maintenance work.
2. Remove Top Lid by unlatching (2) hinges.

3. Use a conventional vacuum cleaner to clean entire inside of Motorhead/Vacuum Head Assembly and drum (canister).

Upon completion of the service work, install top lid according to the following procedure:

Installation

1. Place cleaned unit onto the drum (canister) and latch (2) hinges to properly attach the lid. Unit is now ready for operation.

TILT-N-CLEAN OPERATION INSTRUCTION

Unit has a Tilt-n-Clean feature to aid in overall functionality of the work equipment and work environment:

1. Unplug the unit before attempting service or maintenance work.
2. Unclamp and remove Motorhead/Vacuum Head Assembly.

Drum (canister) is now able to be tilted backwards and emptied. Dispose of debris properly.

3. Or, pull side release hinges away from the drum (canister) and remove the entire drum (canister) from the trolley. With drum (canister) removed dispose of debris properly.

OPERATING TIPS AND TROUBLESHOOTING

Keep machine clean to ensure optimum performance. After each use, lift off vacuum head and knock dust from filter. After one hour of continuous use, lift out the Motorhead/Vacuum Head Assembly and check the amount of dust accumulated in the unit. Remove the dust bag if necessary and replace with a new one. We recommend a soft brush to clean the filter. **DO NOT USE A BLOW GUN.**

Decrease in Vacuum Performance

1. Clean the filter thoroughly and as often as necessary. The filter used inside is water resistant and washable. To prevent damage, do not use high pressure or solvent to wash the filter.

2. If the filter (P/N 64684) should become damaged or badly clogged and cannot be cleaned, replace with a new one.
3. Check all the vacuum lines for blockage or leakage.

Vacuum Stops During Use

1. This vacuum is equipped with a Electronic Thermal Protection Device. If the vacuum stops and the red indicator light appears ON, the unit has shut down as a result of increased temperature. Once the unit has regained a temperature that is allowable for operation the vacuum will resume operation.

TECHNICAL SPECIFICATIONS – PORTABLE VACUUM SYSTEMS

Model No......All Models (Reference Pg. 1)
Noise Level 76 Decibels
Air Pressure..... 80 to 150 PSIG (5.6 to 10.4 Bar)
Filter..... H.E.P.A. (0.3 micron)
Unit Capacity Size 9.9 gallon/36 liter
17 gallon/64 liter
No. of Vacuum Outlets 2
No. of Pneumatic Outlets .. 2

Construction Stainless Steel Drum (Canister)
Remainder: Plastic and Metal Components.
Dust & Debris Collection.... Paper Bag, H.E.P.A.(0.3 micron) w/ felt insert.
Standard Vacuum Hose (2) 20' x 1-1/4" Light Weight Coaxial Hose
(6m x 32mm)
Vacuum Control..... Variable
Cord Set..... 27' (8m)

DYNABRADE CUSTOMER SERVICE

US Consumers Call Toll-Free: 1-800-828-7333 • Canadian Consumers Call Toll-Free: 1-800-344-1488

DYNABRADE, INC.

8989 Sheridan Drive • Clarence, New York 14031-1490 • Phone: (716) 631-0100
Fax: 716-631-2073 • US Consumers Call Toll Free: 1-800-828-7333

DYNABRADE INTERNATIONAL

8989 Sheridan Drive • Clarence, New York 14031-1490 • Phone: (716) 631-0100
Fax: 716-631-2524 • Canadian Consumers Call Toll Free: 1-800-344-1488

DYNABRADE EUROPE S.à r.l.

Zone Artisanale • L-5485 Wormeldange-Haut, Luxembourg
Phone: +352 768 494 1 • Fax: +352 768 495

DYNABRADE DO BRASIL

Rua Mário Fongaro • 421 – Vila Marlene • São Bernardo do Campo
SP – CEP 09732-530 • Telefax: (11) 4124-6040



"M" CLASS DRY VACUUM



(MT20)



www.dynabrade.com

