

8" Cut & Polish Head Assemblies

Assembly Conversion Instructions

SAVE THIS DOCUMENT, EDUCATE ALL PERSONNEL

Accessory:

61383 – Accepts M16 x 2 Spindle Thread

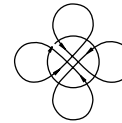
61384 – Accepts 5/8"-11 Spindle Thread

61385 – Accepts M14 x 2 Spindle Thread

(All Models 3,200 RPM Maximum)



**3/4" Random
Orbit Motion**



**Direct Rotary
Motion**

&



SAFETY INSTRUCTIONS

Carefully Read all instructions before operating or servicing any Dynabrade® Accessory.

Products offered by Dynabrade are not to be modified, converted or otherwise altered from the original design without expressed written consent from Dynabrade, Inc.

Accessory Intent: Locking Random Orbital Head Assemblies are ideal for expanding the versatility of any tool with a 5/8"-11, M14 x 2 or M16 x 2 spindle.

Do Not Use accessory for anything other than rotary/random orbital buffing/polishing applications.

This accessory is not intended for use in potentially explosive atmospheres and is not insulated against contact with electrical power.

Training: Proper care, maintenance, and storage of your tool/accessory will maximize their performance.

- Employer's Responsibility – Provide power tool operators with safety instructions and training for safe use of tools and accessories.

Accessory Selection:

- Abrasive/accessory RPM (speed) rating MUST be approved for AT LEAST the tool or accessory RPM rating.
- Before mounting an accessory, visually inspect for defects. Do not use defective accessories.
- Follow tool/accessory specifications before choosing size and type of accessory.

OPERATING INSTRUCTIONS

Warning: Always wear personal protective equipment.

Caution: After installing the accessory, before testing or use and/or after reassembling tool, the Random Orbital Head Assembly must be started at a reduced speed to check for good balance. Gradually increase tool speed. DO NOT USE if tool vibration is excessive. Correct cause, and retest to insure safe operation.

- **Please refer to original manufacturers tool specifications for maximum RPM rating and any other safety requirements. Power Tool RPM must never exceed accessory RPM rating of 3,200 RPM.**
- Check accessory for details on maximum operating speed, special mounting instructions are provided on page 2.
- Hand, wrist and arm injury may result from repetitive work, motion and overexposure to vibration.
- Keep hand and clothing away from working end of the power tool.
- Be sure that any loose clothing, hair and all jewelry is properly restrained.
- BEFORE MOUNTING AN ACCESSORY, after all tool repairs and whenever a Locking Random Orbital Head Assembly is issued for use, check tool RPM/OPM(speed) with tachometer while the tool is running. If tool is operating at a higher speed than the RPM marked on the tool housing, or operating improperly, the tool must be serviced and corrected before use.
- Disconnect tool from power supply when changing accessories.
- Ensure that self-fixing and hook accessories are mounted concentrically.
- Make sure that work area is uncluttered, and visitors are at a safe range from the tools and debris. Potentially explosive atmospheres can be caused by dust and fumes resulting from buffing or polishing. Always use dust extraction or suppression systems which are suitable for the material being processed.
- Proceed with caution in unfamiliar surroundings. Hidden hazards may exist, such as electricity or other utility lines.
- When applicable use a vise or clamping device to hold work piece firmly in place.
- Work may generate hazardous dust.
- Do not apply excessive force on tool/accessory or apply "rough" treatment to it.
- Always work with a firm footing, posture and proper lighting.
- Ensure that sparks and debris resulting from work do not create a hazard.

REPORT TO YOUR SUPERVISOR ANY CONDITION OF THE TOOL, ACCESSORIES, OR OPERATION YOU CONSIDER UNSAFE.

Power Tool/Random Orbital Head Assemblies

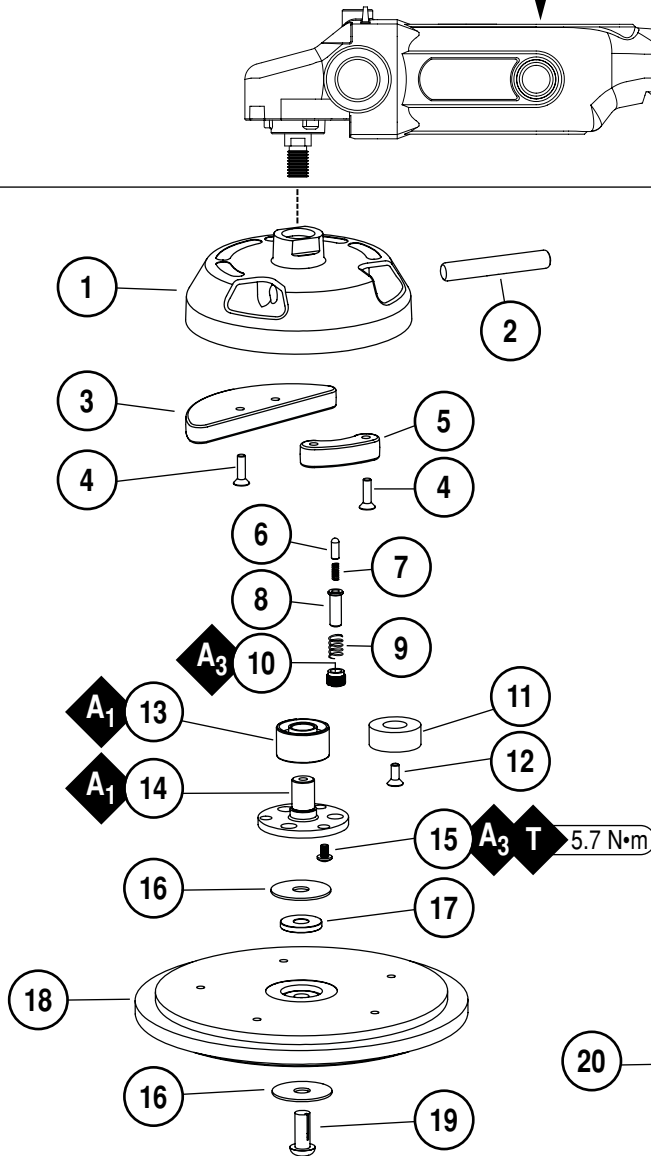
Dynabrade Model

Ready To Accept Accessory:

Electric: 51580 (5/8"-11 Spindle Thread)

Power Tool

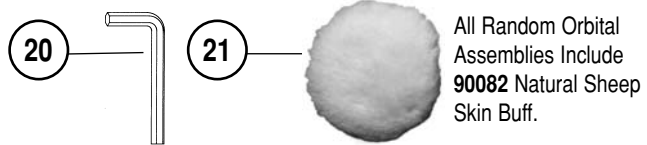
MAXIMUM TOOL RPM MUST
NOT EXCEED RATING OF 3,200 RPM.



| KEY | A Adhesive: A ₁ = Loctite #609 |
|----------|--|
| | A ₃ = Loctite #242 |
| T | Torque: N·m x 8.85 = In. - lbs. |

Index Key

| No. | Part # | Description |
|-----|--------|------------------------|
| 1 | 61390 | Housing - 5/8"-11 |
| | 61391 | Housing - M14 x 2 |
| | 61399 | Housing - M16 x 2 |
| 2 | 61394 | Switch Shaft |
| 3 | 61386 | Counterweight |
| 4 | 95217 | Screw (4) |
| 5 | 61388 | Counterweight |
| 6 | 61396 | Locking Pin Insert |
| 7 | 61397 | Spring |
| 8 | 61393 | Pin |
| 9 | 61395 | Switch Spring |
| 10 | 61398 | Locking Pin Bushing |
| 11 | 61387 | Counterweight |
| 12 | 61389 | Screw |
| 13 | 56052 | Bearing |
| 14 | 61392 | Shaft Balancer |
| 15 | 95235 | Screw (3) |
| 16 | 94594 | Washer (2) |
| 17 | 94595 | Spacer |
| 18 | 50855 | Pad |
| 19 | 96168 | Screw |
| 20 | 95049 | Hex Key Wrench (3/16") |
| 21 | 90082 | Buff |



All Random Orbital
Assemblies Include
90082 Natural Sheep
Skin Buff.

Installation/Pad Change/Storage

Random Orbital Head Installation Procedure:

1. Make spindle stationary; use spindle lock if applicable and/or an open-end wrench to hold spindle.
2. Install locking orbital head assembly onto spindle and tighten.
3. Tool will now accept desired pad accessory.
4. Connect machine to power supply and check for proper operation.

Random Orbital Head Assembly Installation Complete.

Storage/Handling:

- Do not rest tool on pad edge - may cause distortion of pad.
- Use of tool rest and/or balancers are recommended.

Pad Change Procedure:

1. Disconnect tool from power supply.
2. Make sure pad is facing up, lock random orbital sanding head in rotary mode and use **95049** (3/16") Hex Wrench to remove **96168** Screw and backing pad.
3. Change pad and fasten with one **96168** Screw until tight.
Note: When installing pad remember to use the correct spacer and washers to ensure a proper fit, see diagram above.
4. Tool will now accept desired pad accessory.

Pad Change Complete.

DYNABRADE, INC.

8989 Sheridan Drive • Clarence, NY 14031-1490 • Phone: (716) 631-0100 • Fax: 716-631-2073 • International Fax: 716-631-2524

©DYNABRADE, INC., 2008

PRINTED IN USA

www.dynabrade.com

PD08.10_rev.1_03/08

