



# Portable Vacuum System

## Parts List

- 61292** (9.9 gal./36 ltr.) 230v-50Hz (UK)
- 61293** (17 gal./64 ltr.) 230v-50Hz (UK)
- 61294** (9.9 gal./36 ltr.) 110v-60Hz (UK)

- 61296** (9.9 gal./36 ltr.) 230v-50Hz (EUR)
- 61297** (17 gal./64 ltr.) 230v-50Hz (EUR)



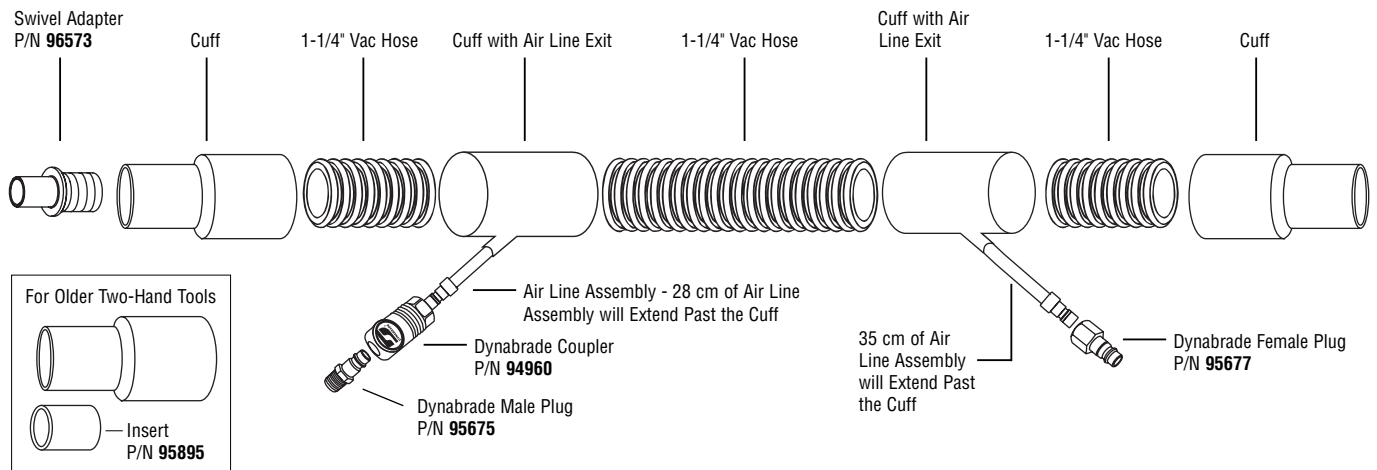
9.9 gal./36 ltr.  
Model Shown



**“M” CLASS DRY VACUUM**

When employed in accordance with their intended use, the industrial vacuum cleaners described in these operating instructions are suitable for picking up non-flammable, dry dusts. They correspond to dust class “M” in accordance to: EN 60335-2-69. By SLG, Germany

### 94941 COAXIAL VACUUM HOSE ASSEMBLY



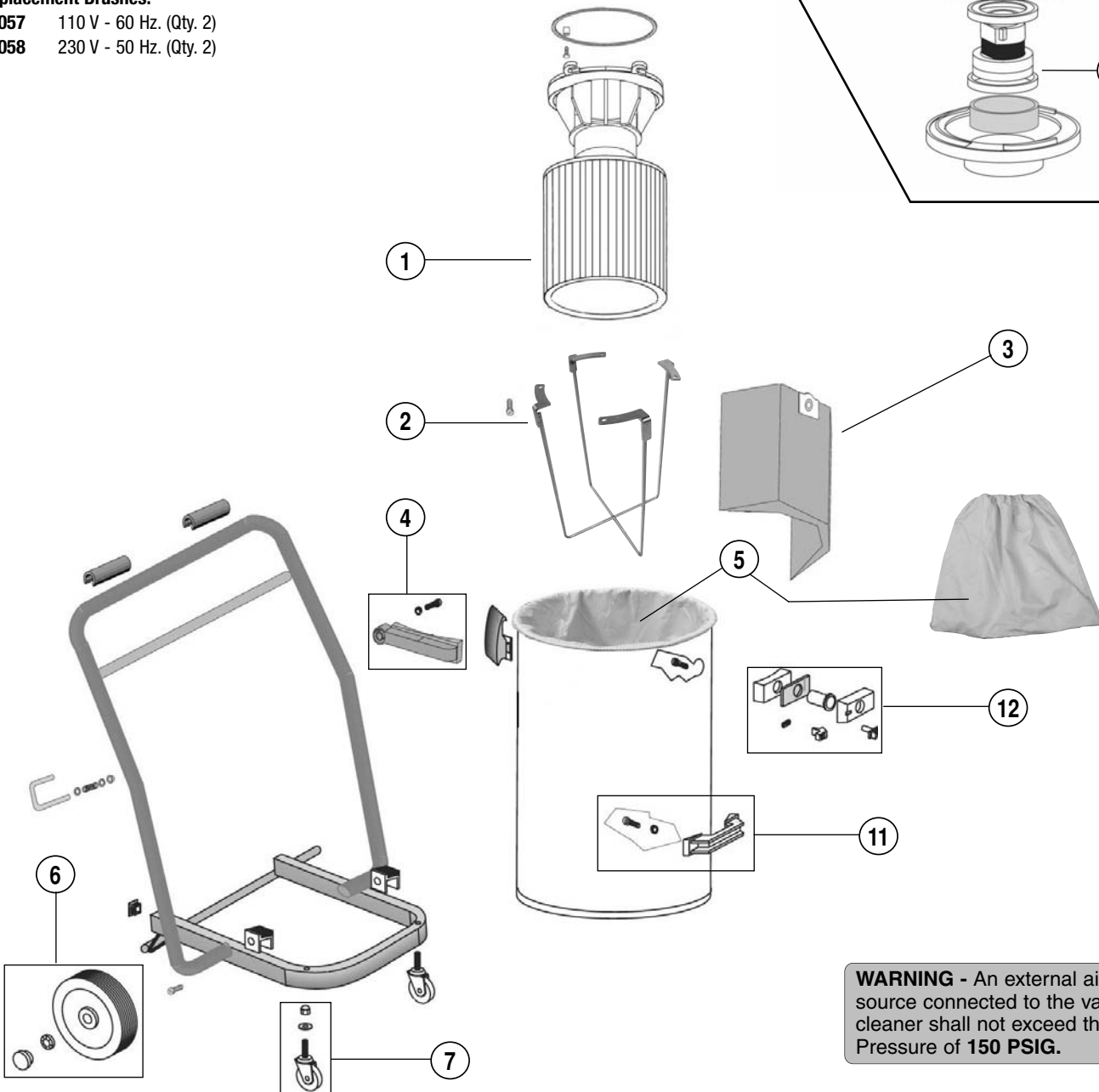
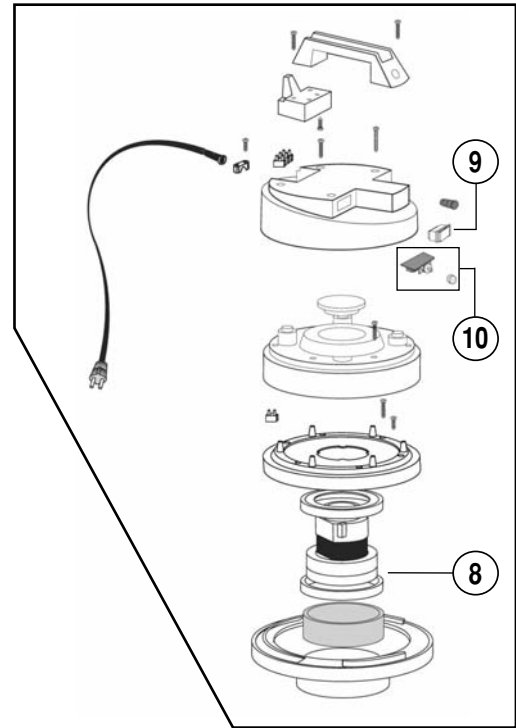
# MACHINE PARTS LIST – (9.9 gal./36 ltr.)

| ITEM | PART NO. | DESCRIPTION                                   |
|------|----------|-----------------------------------------------|
| 1    | 80040    | H.E.P.A. Filter                               |
| 2    | 80042    | Filter Cage (Includes 4 Screws)               |
| 3    | 64682    | Disposable Vacuum Bag (10/Pkg.)               |
| 4    | 80055    | Side Hinge                                    |
| 5    | 80041    | Pre-Filter                                    |
| 6    | 80052    | Rear Wheel Assembly                           |
| 7    | 80050    | Standard Front Wheel Assembly                 |
| 8    | 80059    | Motor (110 V - 60 Hz)                         |
|      | 80060    | Motor (230 V - 50 Hz)                         |
| 9    | 80077    | Power Switch                                  |
| 10   | 80053    | Vacuum Speed Control Assembly (110 V - 60 Hz) |
|      | 80054    | Vacuum Speed Control Assembly (230 V - 50 Hz) |
| 11   | 80081    | Handle Assembly                               |
| 12   | 80085    | Vacuum Inlet Assembly                         |

### Replacement Brushes:

- 80057** 110 V - 60 Hz. (Qty. 2)  
**80058** 230 V - 50 Hz. (Qty. 2)

### MOTORHEAD ASSEMBLY



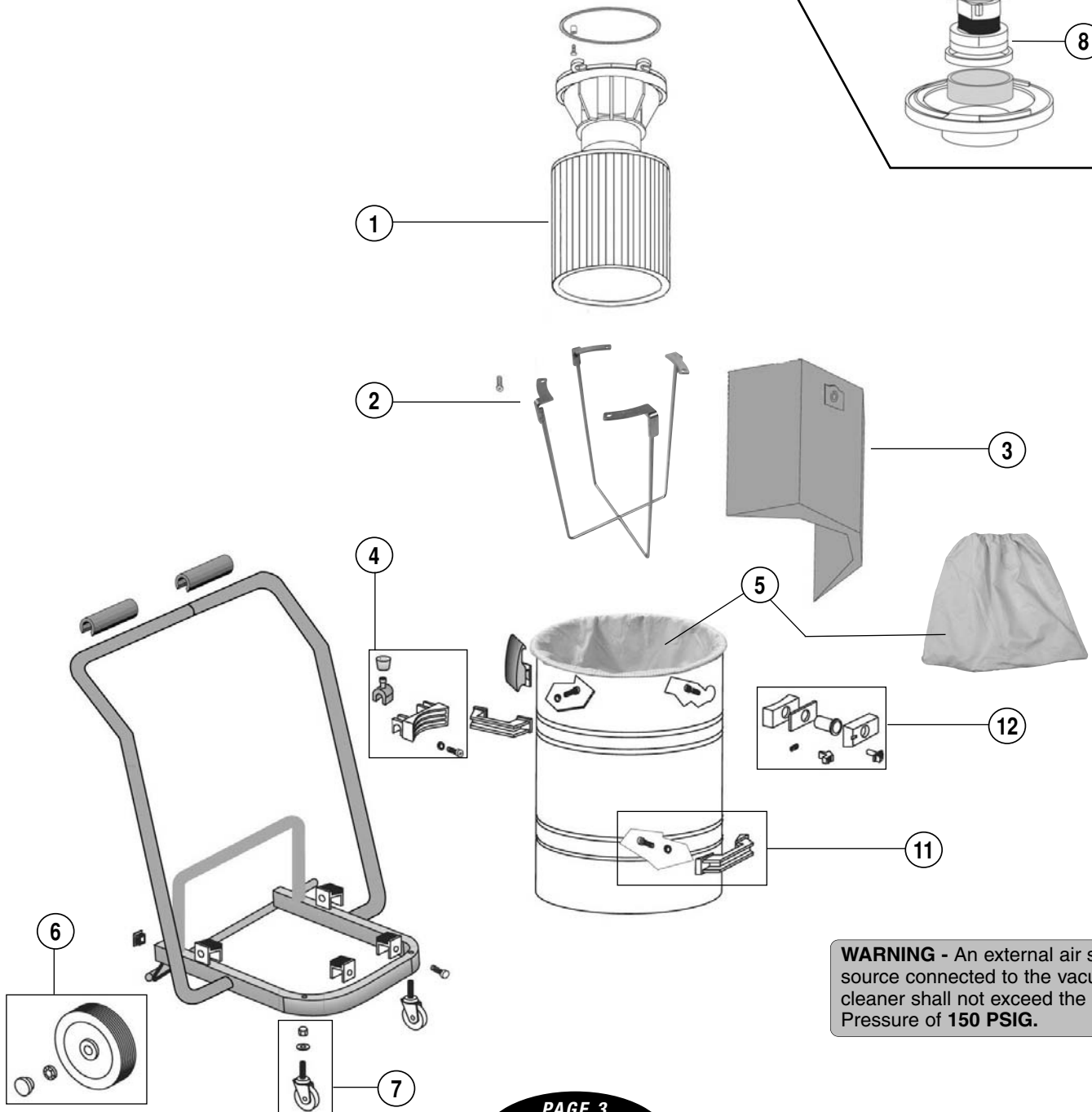
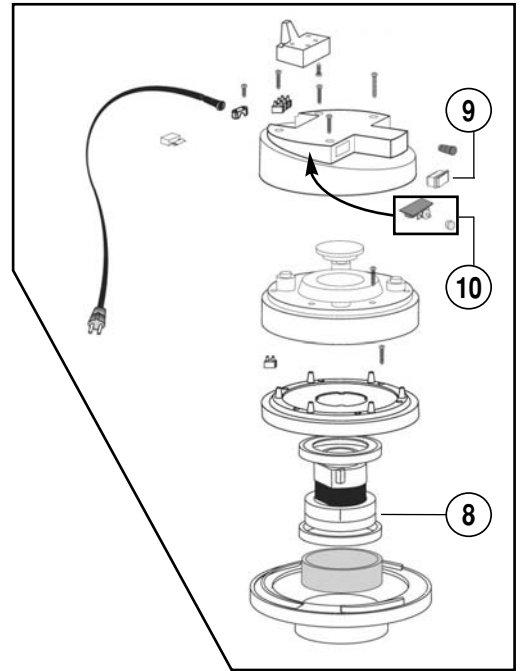
**WARNING** - An external air supply source connected to the vacuum cleaner shall not exceed the Max Pressure of **150 PSIG**.

# MACHINE PARTS LIST – (17 gal./64 ltr.)

| ITEM | PART NO. | DESCRIPTION                                   |
|------|----------|-----------------------------------------------|
| 1    | 80040    | H.E.P.A. Filter                               |
| 2    | 80042    | Filter Cage (Includes 4 Screws)               |
| 3    | 80076    | Disposable Vacuum Bag (10/Pkg.)               |
| 4    | 80056    | Rear Hinge Assembly                           |
| 5    | 80039    | Pre-Filter                                    |
| 6    | 80052    | Rear Wheel Assembly                           |
| 7    | 80050    | Standard Front Wheel Assembly                 |
| 8    | 80060    | Motor (230 V - 50 Hz)                         |
| 9    | 80077    | Power Switch                                  |
| 10   | 80054    | Vacuum Speed Control Assembly (230 V - 50 Hz) |
| 11   | 80081    | Handle Assembly                               |
| 12   | 80085    | Vacuum Inlet Assembly                         |

**Replacement Brushes:**  
**80058** 230 V - 50 Hz. (Qty. 2)

## MOTORHEAD ASSEMBLY



**WARNING** - An external air supply source connected to the vacuum cleaner shall not exceed the Max Pressure of **150 PSIG**.

## OPTIONAL ACCESSORIES



### Replacement Brushes

- 80057** 110 V - 60 Hz. (Qty. 2)  
**80058** 230 V - 50 Hz. (Qty. 2)



### 80051 Locking Front Wheel Assembly

- Allows to lock the entire unit with the simple ease of a push-lock system.



### Disposable Vacuum Paper Bag

- A minimum order quantity of 10.

- 64682** (9.9 gal./36 ltr.) 10/Pkg.  
**80076** (17 gal./64 ltr.) 10/Pkg.



### 64686 "Y" Vacuum Connector

- Allows for two tools to be connected to the same Portable Vacuum System.



### 61361 Vacuum Edge Guard

- Non-Marring protective edge allows vacuum unit to be placed on finished surfaces.

**Note:** For use with 9.9 gal./36 ltr. models only.



### 96558 Vacuum Cleaning Kit

(Includes The Following)

- Hose
- Extension Pipe (2)
- Curved Handle

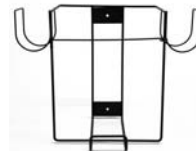
(Includes The Following Attachments)

- Round Brush
- Coarse Dirt Nozzle
- Crevis Tool



### 96581 Vacuum Tray Hose Hanger

- Easily installed onto Vacuum Tray. (Requires Vacuum Tray To Install.)



### 96534 Wall Mount Bracket

- Keep vacuum off floor and convenient for use.

**Note:** For use with 9.9 gal./36 ltr. models only.



Dynabrade Offers A Complete Line of Hose Cuffs and Reducers. Refer To Dynabrade's Current Catalog



### Vacuum Filter

- Large filtration surface area offers a longer usable life before needing to be replaced.

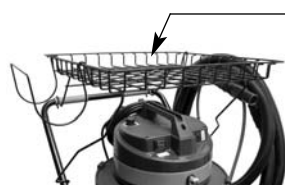
**80040** H.E.P.A. Filter



### Pre-Filter

- Polycarbon pre-filter prevents vacuum filter from quickly getting clogged.

- 80041** (9.9 gal./36 ltr.)  
**80039** (17 gal./64 ltr.)



### Vacuum Tray

- A convenient storage shelf that rests on top of the vacuum to place work related items.

**96567** (9.9 gal./36 ltr.)

## DYNABRADE CUSTOMER SERVICE

US Consumers Call Toll-Free: 1-800-828-7333 • Canadian Consumers Call Toll-Free: 1-800-344-1488

### DYNABRADE, INC.

8989 Sheridan Drive • Clarence, New York 14031-1490 • Phone: (716) 631-0100  
 Fax: 716-631-2073 • US Consumers Call Toll Free: 1-800-828-7333

### DYNABRADE INTERNATIONAL

8989 Sheridan Drive • Clarence, New York 14031-1490 • Phone: (716) 631-0100  
 Fax: 716-631-2524 • Canadian Consumers Call Toll Free: 1-800-344-1488

### DYNABRADE EUROPE S.à r.l.

Zone Artisanale • L-5485 Wormeldange-Haut, Luxembourg  
 Phone: +352 768 494 1 • Fax: +352 768 495

### DYNABRADE DO BRASIL

Rua Mário Fongaro • 421 - Vila Marlene • São Bernardo do Campo  
 SP - CEP 09732-530 • Telefax: (11) 4124-6040

[www.dynabrade.com](http://www.dynabrade.com)

